

**VENDIM**  
**Nr. 300, datë 24.4.2026**

**PËR SHPALLJEN E DISA ZONAVE ME PËRPARËSI ZHVILLIMIN E  
EKONOMISË MALORE NË BASHKINË KAMZË**

Në mbështetje të nenit 100 të Kushtetutës dhe të pikës 1, të nenit 4, të ligjit nr. 20/2025, “Për paketën e maleve”, me propozimin e ministrit të Shtetit për Pushtetin Vendor, Këshilli i Ministrave

**VENDOSI:**

1. Shpalljen “Zonë me përparësi zhvillimin e ekonomisë malore” të disa zonave në territorin e Bashkisë Kamzë, si më poshtë vijon:

a) Zona nr. 1, fshati Kodër Babrru, zona kadastrale 1066, pjesë e Njësisë Administrative Paskuqan, Bashkia Kamzë, qarku Tiranë, me sipërfaqe 1 (një) ha, sipas hartës në sistemin KRGJSH;

b) Zona nr. 2, fshati Kodër Babrru, zona kadastrale 1066, pjesë e Njësisë Administrative Paskuqan, Bashkia Kamzë, qarku Tiranë, me sipërfaqe 22 (njëzet e dy) ha, sipas hartës në sistemin KRGJSH;

c) Zona nr. 3, fshati Kodër Babrru, zona kadastrale 1066, pjesë e Njësisë Administrative Paskuqan, Bashkia Kamzë, qarku Tiranë, me sipërfaqe 131 (njëqind e tridhjetë e një) ha, sipas hartës në sistemin KRGJSH.

2. Shtrirja, kufijtë dhe pikat e hyrjes e të daljes së këtyre zonave përcaktohen në hartën treguese, sipas sistemit KRGJSH, që i bashkëlidhet këtij vendimi.

3. Llojet e aktiviteteve, që do të zhvillohen në këtë zonë, janë:

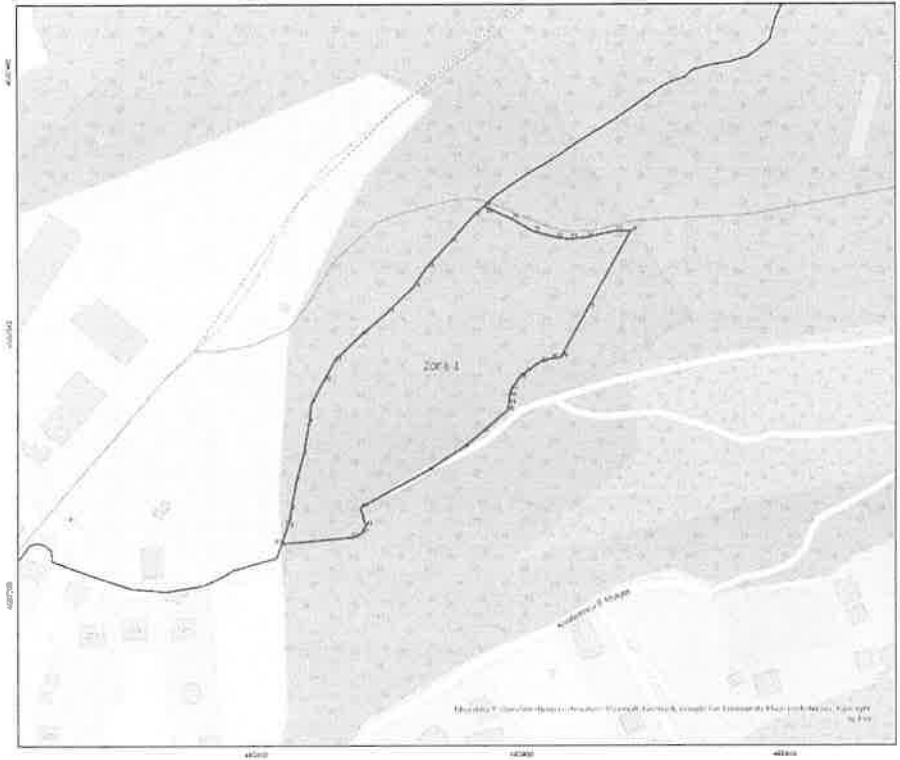
- të zhvillimit ekonomik;
- të zhvillimit industrial;
- të zhvillimit turistik.

4. Ngarkohen Ministria e Ekonomisë dhe Inovacionit, Agjencia Shtetërore e Kadastrës dhe Bashkia Kamzë për zbatimin e këtij vendimi.

Ky vendim hyn në fuqi pas botimit në Fletoren Zyrtare.

**KRYEMINISTËR**  
**Edi Rama**

ZONA ME PËRPARËSI ZHVILLIMIN E EKONOMISË MALORE  
 ZONA 1. NJËSIA ADMINISTRATIVE PASKUQAN . BASHKIA KAMËZ, QARKU TIRANË



Tipi i Nivërit	Drejtoria	Spj. Topo-El. (1:500)
Pastruar	Drejt. 1	1
Pastruar	Drejt. 2	2
Pastruar	Drejt. 3	3

1:1.500

**Legjenda**

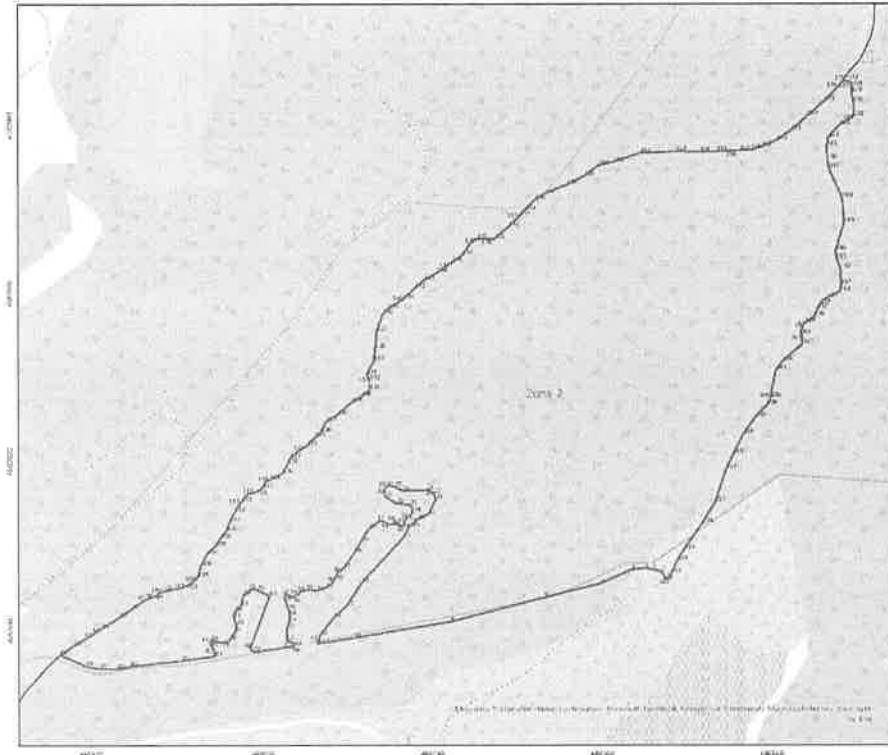
- zona me përparësi zhvillimin e ekonomisë malore
- Nivërit
- Bashkia Kamëz
- Llojet
- Kategoria e Rivollit Topografik
- P. Rreze Lokale


"Zona 1" është në tërësi në Mbrojtjen Administrative Paskuqan me sipërfaqe 1500 TPa

Projekti i Këshillit të Paskuqan, 2014, 2015, 2016 dhe 2017

Zona 1		
Njësia Administrative Paskuqan		
Nr.	Koordinata X	Koordinata Y
1	485673.5634	4582227.408
2	485677.0454	4582237.897
3	485677.4251	4582239.041
4	485677.4675	4582239.29
5	485678.5673	4582245.763
6	485681.1429	4582260.919
7	485684.9521	4582274.859
8	485688.0617	4582292.099
9	485689.2627	4582302.7
10	485695.7414	4582314.685
11	485701.5737	4582325.339
12	485714.6531	4582338.724
13	485729.071	4582350.801
14	485742.812	4582364.193
15	485749.9675	4582374.863
16	485762.3853	4582388.24
17	485774.7954	4582402.279
18	485780.4064	4582407.417
19	485781.4875	4582406.927
20	485795.1829	4582400.72
21	485806.8246	4582393.974
22	485818.5985	4582390.931
23	485826.073	4582390.005
24	485835.135	4582390.865
25	485850.0179	4582394.304
26	485858.4184	4582394.37
27	485835.3996	4582352.765
28	485820.9798	4582326.968
29	485815.4235	4582326.306
30	485809.6027	4582324.454
31	485802.1282	4582319.03
32	485798.8209	4582316.054
33	485794.5214	4582309.704
34	485793.6615	4582305.933
35	485793.3308	4582302.031
36	485792.6032	4582298.723
37	485778.7787	4582286.553
38	485768.9229	4582278.549
39	485749.939	4582266.246
40	485714.8155	4582246.799
41	485717.5275	4582236.745
42	485715.2124	4582233.107
43	485711.9051	4582230.924
44	485673.5634	4582227.408

**ZONA ME PËRPARËSI ZHVILLIMIN E EKONOMISË MALORE**  
**ZONA 2, NJESIA ADMINISTRATIVE PASKUQAN, BASHKIA KAMEZ, QARKU TIRANË**





Waza e Administrimit	Emri	Shprehësi
Popullsi	2000	1
Kullosat	1000	20
Kullosat	1000	100



1:10,000



**Legjenda**

- Zona me përparësi zhvillimin e ekonomisë malore
- Bashkia Kamez
- Ujëvar

Kategori e Niveli i Ujëvarit  
 F. Bujqësi Lokale

Zona 2 ndodhet në fshatin e Njësisë Administrative Paskuqan me sipërfaqe 5000 m<sup>2</sup> Pa  
 \*Zemërimi i hartës: 2010/01/10, Niveli i Hartës: 1:10,000  
 © 2010/01/10

Zona 2								
Njësia Administrative Paskuqan								
Nr.	Koordinata X	Koordinata Y	Nr.	Koordinata X	Koordinata Y	Nr.	Koordinata X	Koordinata Y
1	486431.7762	4582495.306	74	485970.7586	4582460.202	147	486212.4084	4582840.737
2	486426.8549	4582495.623	75	485968.9595	4582455.757	148	486220.8642	4582853.407
3	486422.3305	4582502.608	76	485972.6636	4582445.809	149	486227.4268	4582858.114
4	486413.123	4582505.069	77	485971.0232	4582437.924	150	486232.7196	4582858.175
5	486405.1855	4582506.101	78	485964.6732	4582429.14	151	486246.6134	4582858.335
6	486391.533	4582504.592	79	485956.9474	4582426.759	152	486261.6852	4582871.082
7	486357.5604	4582489.67	80	485946.364	4582429.563	153	486271.5024	4582880.458
8	486298.9021	4582474.986	81	485944.8294	4582427.446	154	486273.42	4582882.585
9	486199.6038	4582449.268	82	485946.1523	4582423.319	155	486279.3424	4582889.151
10	486097.448	4582432.044	83	485948.5336	4582420.62	156	486289.8059	4582899.859
11	486058.5542	4582425.773	84	485950.0153	4582412.259	157	486299.6537	4582906.589
12	486058.4748	4582429.107	85	485914.8785	4582407.497	158	486323.3645	4582916.127
13	486061.2529	4582435.139	86	485861.3267	4582401.729	159	486341.1287	4582924.934
14	486075.0642	4582452.919	87	485847.8859	4582398.924	160	486356.2157	4582936.356
15	486089.2724	4582466.413	88	485828.1479	4582398.766	161	486372.71	4582940.517
16	486105.1474	4582490.94	89	485814.8129	4582401.729	162	486400.3982	4582949.439
17	486199.4387	4582538.406	90	485787.2362	4582413.671	163	486438.0944	4582951.197
18	486154.9156	4582548.169	91	485802.9925	4582424.44	164	486463.243	4582950.825
19	486158.8844	4582553.011	92	485816.7946	4582432.539	165	486487.0608	4582951.1
20	486163.9644	4582557.833	93	485823.5114	4582437.13	166	486491.1885	4582951.295
21	486176.4263	4582564.124	94	485830.5814	4582441.962	167	486505.5781	4582951.976
22	486183.8082	4582578.967	95	485850.2921	4582454.1	168	486518.1409	4582952.782
23	486181.9825	4582585.952	96	485862.7633	4582462.846	169	486529.3501	4582956.22
24	486177.1407	4582589.048	97	485875.2346	4582471.592	170	486545.1523	4582963.019
25	486174.1244	4582589.365	98	485880.4969	4582474.3	171	486560.9086	4582973.788
26	486149.2006	4582588.651	99	485887.0901	4582476.361	172	486577.9348	4582989.204
27	486140.8662	4582592.858	100	485891.6755	4582480.384	173	486596.2765	4583005.296
28	486134.9924	4582593.969	101	485901.569	4582483.144	174	486610.0099	4583019.35
29	486131.4206	4582592.937	102	485911.4778	4582484.582	175	486614.0578	4583025.053
30	486129.2774	4582588.968	103	485920.7097	4582487.336	176	486615.2984	4583026.801
31	486129.9124	4582583.094	104	485927.2723	4582492.043	177	486620.5568	4583026.405
32	486142.6125	4582574.998	105	485932.5117	4582496.735	178	486624.7901	4583024.606
33	486156.3444	4582573.966	106	485935.6823	4582508.683	179	486624.8959	4583014.234
34	486160.2337	4582569.204	107	485942.1457	4582521.991	180	486626.4834	4583003.651
35	486157.6937	4582562.774	108	485950.6549	4582530.029	181	486626.8009	4582988.728
36	486152.5344	4582559.203	109	485955.8561	4582538.03	182	486621.1918	4582984.812
37	486151.4231	4582554.519	110	485962.3729	4582546.707	183	486611.6667	4582979.097
38	486149.6769	4582551.979	111	485966.2281	4582556.677	184	486600.3425	4582965.974
39	486147.2162	4582551.106	112	485970.7524	4582565.993	185	486598.5434	4582956.66
40	486141.025	4582556.742	113	485976.6	4582575.324	186	486599.1784	4582942.69
41	486138.485	4582553.17	114	485978.1786	4582577.313	187	486600.8717	4582933.165
42	486134.7543	4582552.456	115	485985.0787	4582586.009	188	486614.9476	4582901.733
43	486125.4674	4582557.377	116	485993.6643	4582587.431	189	486616.8526	4582874.957
44	486112.4499	4582547.773	117	486000.8885	4582592.146	190	486607.9626	4582844.794
45	486104.0361	4582534.438	118	486004.1201	4582598.801	191	486608.2801	4582839.397
46	486097.5274	4582522.849	119	486008.0669	4582600.831	192	486613.1484	4582825.85
47	486085.7005	4582505.862	120	486021.8842	4582607.608	193	486613.4659	4582808.176
48	486079.5886	4582501.576	121	486027.0625	4582617.593	194	486612.3017	4582800.979
49	486077.8423	4582496.814	122	486029.6403	4582623.578	195	486599.1784	4582795.158
50	486074.1911	4582490.94	123	486038.8111	4582631.624	196	486591.9817	4582788.808
51	486067.5236	4582485.463	124	486047.3509	4582637.016	197	486588.9125	4582782.882



Zona 3								
Njësia Administrative Paskuqan								
Nr.	Koordinata X	Koordinata Y	Nr.	Koordinata X	Koordinata Y	Nr.	Koordinata X	Koordinata Y
1	486431.7762	4582495.306	114	486984.1154	4582928.979	226	487507.9952	4582108.429
2	486433.0462	4582500.386	115	486987.4378	4582916.312	227	487498.9994	4582105.783
3	486439.8724	4582514.673	116	486992.3296	4582905.252	228	487488.9452	4582107.37
4	486447.1749	4582526.5	117	486997.2031	4582895.78	229	487478.3618	4582113.985
5	486466.3837	4582554.281	118	487003.6003	4582891.884	230	487466.9847	4582114.779
6	486479.7981	4582576.718	119	487011.5121	4582894.357	231	487458.518	4582108.693
7	486491.2282	4582611.537	120	487023.3661	4582899.258	232	487449.2576	4582105.518
8	486498.7423	4582627.306	121	487039.1804	4582904.999	233	487446.3472	4582099.697
9	486509.8549	4582649.108	122	487053.4619	4582905.958	234	487460.1055	4582089.643
10	486522.9782	4582667.417	123	487073.3376	4582903.805	235	487472.8056	4582092.554
11	486534.8316	4582679.694	124	487112.4416	4582886.788	236	487483.3889	4582087.527
12	486538.5358	4582686.891	125	487129.1781	4582881.423	237	487492.9139	4582078.531
13	486538.8219	4582688.373	126	487148.2599	4582879.261	238	487501.3806	4582052.337
14	486544.3566	4582717.053	127	487168.1264	4582877.902	239	487496.3535	4582046.251
15	486551.2358	4582726.684	128	487187.2448	4582872.564	240	487458.518	4582034.345
16	486572.2967	4582744.993	129	487196.0055	4582870.283	241	487446.0826	4582021.91
17	486572.1908	4582753.566	130	487204.7936	4582865.62	242	487421.2117	4582008.681
18	486570.9208	4582758.223	131	487209.6121	4582860.912	243	487392.1075	4582004.712
19	486572.085	4582762.985	132	487212.0672	4582854.588	244	487381.5241	4581998.097
20	486575.26	4582767.748	133	487217.014	4582838.764	245	487372.7929	4581996.245
21	486585.6317	4582774.838	134	487220.3546	4582824.51	246	487363.0033	4581981.428
22	486588.9125	4582782.882	135	487223.6769	4582811.844	247	487356.1241	4581975.078
23	486591.9817	4582788.808	136	487225.3655	4582803.129	248	487357.1824	4581970.316
24	486599.1784	4582795.158	137	487227.8481	4582794.423	249	487429.4138	4581972.168
25	486612.3017	4582800.979	138	487232.7399	4582783.363	250	487447.6701	4581985.133
26	486613.4659	4582808.176	139	487239.1921	4582774.703	251	487460.3701	4581988.043
27	486613.1484	4582825.85	140	487247.2413	4582765.268	252	487574.6703	4581984.339
28	486608.2801	4582839.397	141	487253.7301	4582753.432	253	487594.2496	4581979.312
29	486607.9626	4582844.794	142	487262.5916	4582742.418	254	487609.86	4581969.258
30	486616.8526	4582874.957	143	487274.5372	4582739.38	255	487614.6225	4581953.647
31	486614.9476	4582901.733	144	487291.976	4582741.963	256	487578.1099	4581944.916
32	486600.8717	4582933.165	145	487297.5336	4582742.027	257	487566.4682	4581950.207
33	486599.1784	4582942.69	146	487300.8284	4582731.743	258	487554.8266	4581948.091
34	486598.5434	4582956.66	147	487301.7413	4582721.431	259	487553.2391	4581918.457
35	486600.3425	4582965.974	148	487308.2393	4582708.801	260	487533.3953	4581874.007
36	486611.6667	4582979.097	149	487315.4946	4582699.357	261	487558.0016	4581875.066
37	486621.1918	4582984.812	150	487325.1866	4582685.176	262	487577.5808	4581880.622
38	486626.8009	4582988.728	151	487334.8603	4582672.583	263	487581.5495	4581919.78
39	486626.4834	4583003.651	152	487351.6977	4582658.485	264	487579.962	4581939.095
40	486624.8959	4583014.234	153	487356.5071	4582654.57	265	487615.6808	4581944.916
41	486624.7901	4583024.606	154	487363.6983	4582650.683	266	487620.7079	4581905.228
42	486620.5568	4583026.405	155	487373.9827	4582653.978	267	487625.735	4581884.855
43	486615.2984	4583026.801	156	487388.0006	4582631.907	268	487612.7704	4581838.289
44	486620.4275	4583034.027	157	487404.0319	4582618.858	269	487571.2308	4581785.372
45	486632.8378	4583048.066	158	487395.8564	4582593.354	270	487550.3286	4581759.972
46	486638.6624	4583059.382	159	487390.6796	4582583.237	271	487540.539	4581747.272
47	486645.1105	4583074.014	160	487381.755	4582576.782	272	487535.7765	4581725.576
48	486648.2582	4583087.946	161	487374.4428	4582568.227	273	487540.2744	4581714.463
49	486648.7748	4583100.524	162	487369.2293	4582561.286	274	487550.5932	4581703.615
50	486649.6001	4583116.731	163	487369.8624	4582552.294	275	487549.7995	4581679.274
51	486649.8537	4583121.711	164	487376.8836	4582540.2	276	487539.4807	4581655.726

52	486650.3779	4583133.627	165	487379.0984	4582531.756	277	487526.5161	4581642.496
53	486654.1566	4583150.213	166	487376.5803	4582520.61	278	487495.2952	4581667.103
54	486658.6275	4583164.16	167	487372.9668	4582512.628	279	487478.6264	4581636.411
55	486665.0527	4583180.777	168	487366.6826	4582506.733	280	487478.3618	4581624.769
56	486674.1014	4583199.408	169	487360.3923	4582501.367	281	487483.1243	4581617.096
57	486684.6725	4583235.196	170	487359.9179	4582496.597	282	487482.3306	4581607.307
58	486690.9832	4583261.736	171	487359.9485	4582496.547	283	487476.7743	4581595.401
59	486701.3398	4583281.707	172	487368.5514	4582482.404	284	487468.5722	4581593.019
60	486709.1111	4583296.354	173	487374.4835	4582472.944	285	487439.2034	4581600.428
61	486736.8375	4583301.967	174	487381.5168	4582459.791	286	487418.3013	4581546.982
62	486750.1917	4583291.534	175	487391.2028	4582446.14	287	487437.6159	4581535.34
63	486768.8388	4583281.162	176	487396.6116	4582436.144	288	487445.818	4581525.286
64	486780.8088	4583276.007	177	487402.6048	4582421.392	289	487455.343	4581479.513
65	486791.4709	4583269.513	178	487403.6621	4582418.627	290	487440.2617	4581439.825
66	486804.7334	4583267.019	179	487415.7046	4582387.135	291	487402.6908	4581383.469
67	486821.9352	4583267.218	180	487425.02	4582359.716	292	487366.1783	4581330.817
68	486831.1976	4583267.325	181	487435.9171	4582332.844	293	487359.0345	4581296.95
69	486841.7528	4583270.093	182	487441.9103	4582318.091	294	487349.5095	4581276.312
70	486866.955	4583265.09	183	487442.5006	4582312.805	295	487326.2261	4581252.5
71	486880.2022	4583263.92	184	487441.5214	4582305.912	296	487290.5073	4581223.396
72	486890.8338	4583260.072	185	487449.9062	4582297.98	297	487227.5363	4581280.281
73	486910.743	4583255.009	186	487465.913	4582287.048	298	487234.1509	4581365.742
74	486913.4047	4583253.716	187	487474.3876	4582286.617	299	487215.3655	4581510.205
75	486924.0668	4583247.222	188	487484.4013	4582290.438	300	487215.1009	4581699.911
76	486938.729	4583238.128	189	487498.6737	4582292.19	301	487231.5051	4581754.68
77	486949.3911	4583231.634	190	487502.9019	4582292.769	302	487242.0884	4581780.345
78	486971.9925	4583222.631	191	487508.7179	4582293.365	303	487189.4362	4581850.989
79	486983.9472	4583218.799	192	487515.1304	4582288.145	304	487202.93	4581911.843
80	487015.8264	4583208.579	193	487522.0966	4582280.815	305	487059.8563	4581934.2
81	487023.7809	4583207.348	194	487529.6592	4582267.668	306	486926.9029	4581943.13
82	487035.6899	4583207.485	195	487532.4217	4582257.642	307	486868.6945	4581933.539
83	487044.9523	4583207.592	196	487533.5963	4582247.598	308	486705.3139	4581757.59
84	487063.462	4583209.129	197	487534.2233	4582239.136	309	486693.4076	4581757.921
85	487074.0478	4583209.251	198	487536.9674	4582230.698	310	486684.1472	4581764.536
86	487083.3407	4583206.712	199	487538.6469	4582222.777	311	486657.6888	4581766.851
87	487093.957	4583204.187	200	487544.5118	4582219.139	312	486640.1601	4581784.38
88	487100.6494	4583197.648	201	487554.0572	4582217.661	313	486627.5924	4581787.025
89	487102.0948	4583187.077	202	487562.5563	4582215.112	314	486606.4257	4581762.882
90	487102.2933	4583169.876	203	487574.2495	4582211.012	315	486596.5038	4581749.984
91	487097.1837	4583153.936	204	487585.4072	4582207.436	316	486588.897	4581748.991
92	487092.074	4583137.996	205	487591.783	4582205.392	317	486579.3059	4581754.614
93	487088.2877	4583122.072	206	487599.2541	4582200.184	318	486571.3683	4581776.111
94	487086.3897	4583116.731	207	487597.6602	4582200.695	319	486557.4777	4581788.018
95	487079.3152	4583096.824	208	487612.5472	4582195.044	320	486545.9021	4581789.671
96	487078.2364	4583075.637	209	487619.4768	4582190.889	321	486537.9646	4581797.609
97	487074.511	4583054.42	210	487614.8871	4582178.543	322	486528.0427	4581794.963
98	487070.7247	4583038.496	211	487606.9496	4582162.668	323	486509.5219	4581769.827
99	487064.7448	4583029.163	212	487595.3079	4582122.452	324	486495.102	4581767.512
100	487056.9337	4583017.957	213	487587.1058	4582123.245	325	486482.6666	4581752.431
101	487042.7072	4583012.234	214	487570.9662	4582128.537	326	486452.7686	4581736.821
102	487027.7783	4582998.563	215	487561.7057	4582130.654	327	486419.1665	4581700.837
103	487023.0331	4582996.92	216	487551.9161	4582128.272	328	486387.1518	4581683.375
104	487018.2878	4582995.278	217	487540.8036	4582132.241	329	486371.806	4581658.768
105	487013.5243	4582995.223	218	487551.387	4582196.8	330	486364.3976	4581657.975

106	487009.5546	4582995.177	219	487546.0953	4582203.15	331	486347.7288	4581677.818
107	487000.849	4582992.694	220	487532.0723	4582194.683	332	486334.2351	4581748.198
108	486992.983	4582986.251	221	487519.3723	4582179.866	333	486381.8601	4581914.092
109	486986.7141	4582979.033	222	487515.6681	4582170.606	334	486409.6415	4582021.248
110	486976.4388	4582974.944	223	487521.2244	4582141.766	335	486442.4499	4582169.812
111	486970.9637	4582967.734	224	487520.9598	4582130.654	336	486414.404	4582482.021
112	486970.3073	4582955.816	225	487516.9911	4582119.012	337	486431.7762	4582495.306
113	486977.5991	4582943.196						